



SEXUAL HEALTH:
AN ESSENTIAL
PART OF
RECOVERY

MAY 2, 2024



OVERVIEW

- Collaboration between Northwest MHTTC and Mountain West AETC
- First session of 4-part series
- Recovery-focused
 - Improve quality of mental health care
 - Identify and address disparities
 - Provide holistic care and promote health



TODAY'S OBJECTIVES

- Understand the importance of integrating sexual health into behavioral health care
- Consider opportunities in your own setting for identifying and addressing sexual health needs of clients
- Provide input on development of sexual health training curriculum for behavioral health providers



IS TALKING ABOUT SEX TABOO FOR BEHAVIORAL HEALTH PROVIDERS?

- 99.5% of mental health professionals valued sexuality as an important topic to discuss with their clients
- Only 17.1% reported that they discuss sexuality with more than 75% of clients
- Most frequent reasons:
 - Lack of awareness
 - Lack of knowledge/ information
 - Provider discomfort
 - Perception of client shame



WHY SHOULD BEHAVIORAL HEALTH PROVIDERS ASK ABOUT SEX?



- Positive sexual health is a central component of overall well-being and a key component of a healthy lifestyle
- Meaningful dialogue during clinical encounters about sexual orientation, gender identity and sexual health promotes high-quality mental health care
- Sexual Health is Part of Health!



SEXUAL HEALTH

- Sexuality includes sexual orientation, sexual identity and attitudes and values related to sex.
- Sexual health is NOT just limited to the absence of disease or dysfunction during reproductive years.
- Sexual health is the integration of the somatic, emotional, intellectual and social aspects of sexual being in ways that are positively enriching and that enhance personality, communication and love

WHO 2006

Sexual Health Is More Than Just Sex — It's Also:

Building a positive relationship with your provider

Keeping up with preventive services

Knowing your contraceptive needs

Treating your partner(s) well, & expecting the same

Deciding what your boundaries are

Learning what feels good for you



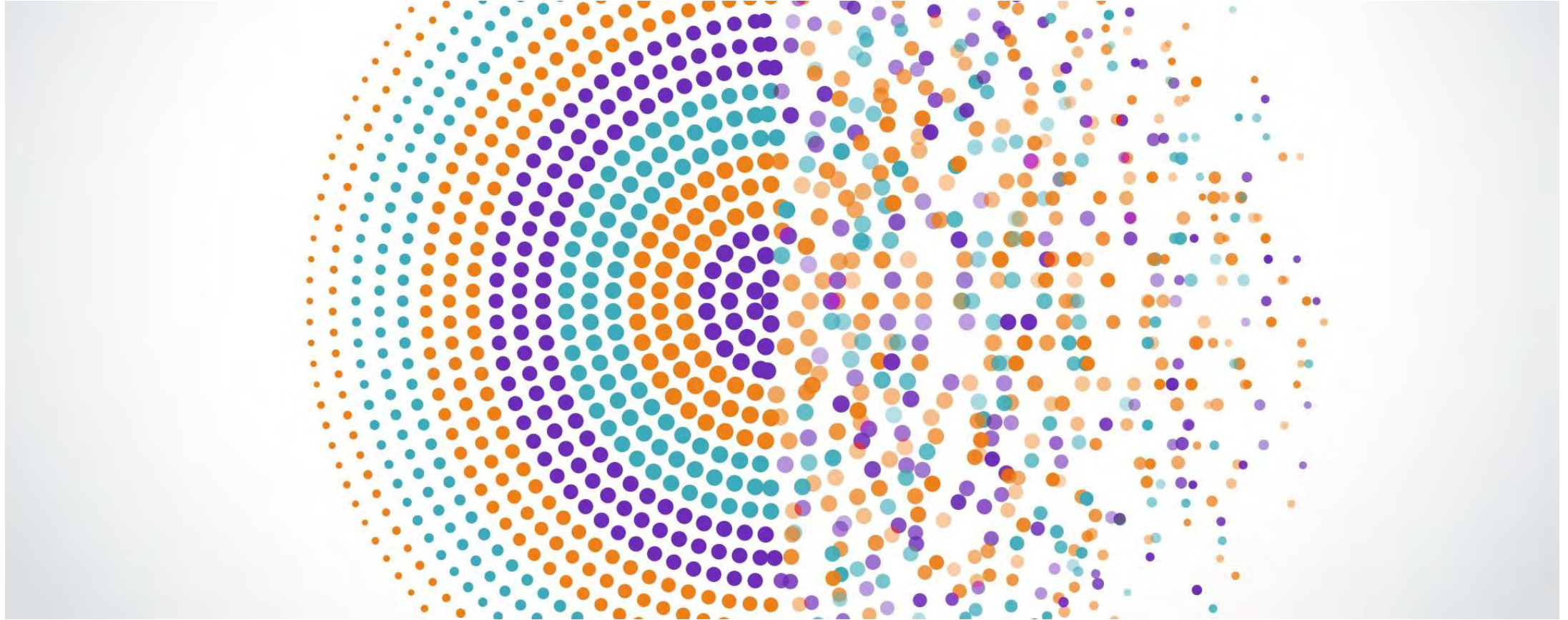
healthline

CHARACTERISTICS OF A SEXUALLY HEALTHY PERSON

- Knowledgeable about sexuality and sexual behavior—and good sources of information
- Positive attitudes about body image
- Ability to express one's full sexual potential
- Ability to make autonomous decisions about one's sexual life
- Capability to express oneself sexually



IMPACT ON BEHAVIORAL HEALTH CARE





"To treat me, you have
to know who I am"

NY city health and
hospitals mandatory
employee training

<https://www.Youtube.Com/watch?V=nuhvjgxgaac>



WE ARE EVERYWHERE

There are more than **9 MILLION**
LGBTQ people in the United States.
It's fair to assume you see LGBTQ
people regularly.

<http://williamsinstitute.law.ucla.edu/research/census-lgbt-demographics-studies/how-many-people-are-lesbian-gay-bisexual-and-transgender>

IDENTIFY AND ADDRESS DISPARITIES

- Lesbian, gay, bisexual, transgender, and other self-identified queer (LGBTQ) youth have **higher rates of mental health issues** than people in the general population.
- A 2016 study suggests that lesbian, gay, and bisexual youth **consider suicide at nearly three times the rate** of heterosexual youth.
- The Trevor Project's 2019 National Survey on LGBTQ Youth Mental Health found that **39% of LGBTQ youth seriously contemplated suicide** in the prior year.



<https://www.thetrevorproject.org/survey-2021/?section=SuicideMentalHealth>

In the past year, nearly half of LGBTQ youth have wanted counseling from a mental health professional but did not receive it.

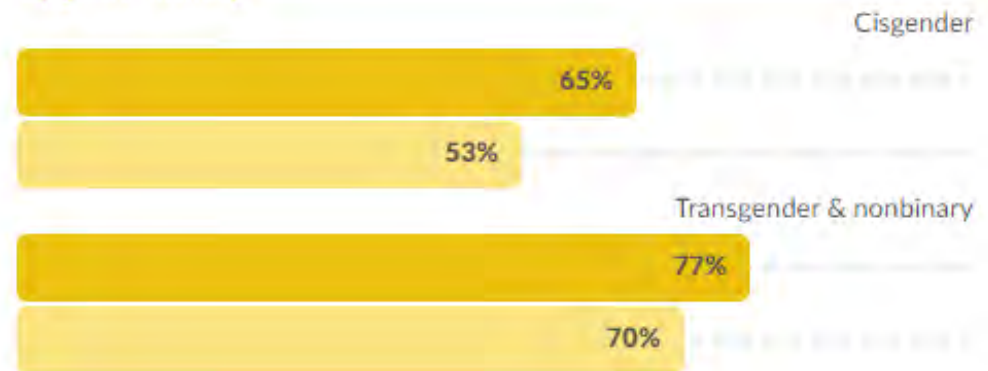
LGBTQ YOUTH MENTAL HEALTH

- 72% of LGBTQ youth reported symptoms of generalized anxiety disorder in the past two weeks, including more than 3 in 4 transgender and nonbinary youth.
- 62% of LGBTQ youth reported symptoms of major depressive disorder in the past two weeks, including more than 2 in 3 transgender and nonbinary youth.

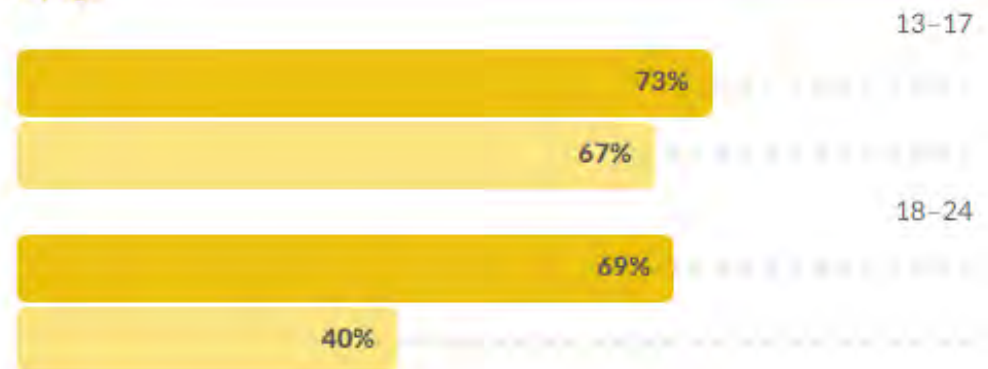
LGBTQ youth who experienced symptoms of:

- Generalized anxiety disorder
- Major depressive disorder

By gender identity

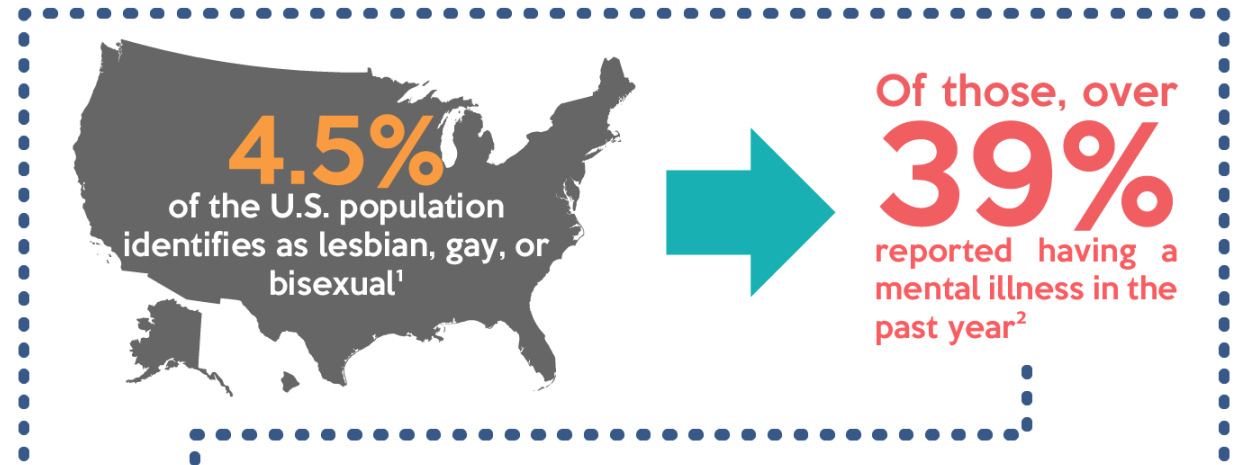


By age



INCREASED RATES OF DEPRESSION AND ANXIETY

- LGBTQIA+ individuals
 - Are more than twice as likely as heterosexual individuals to have a mental health disorder in their lifetime.
 - Are 2.5 times more likely to experience depression, anxiety, and substance misuse.
 - 39% report serious thoughts of suicide.

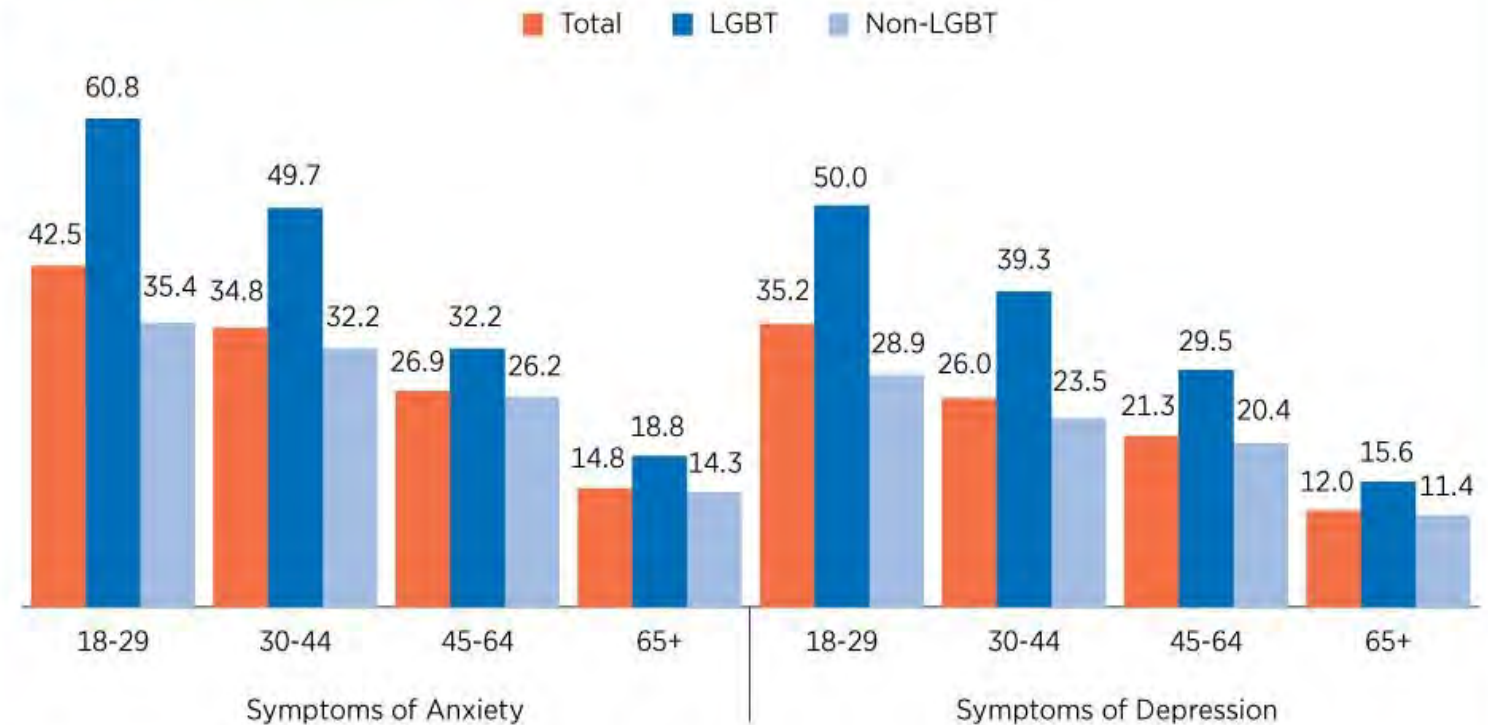


Increased rates of depression and anxiety across all age groups (n= 65,488)

Figure 2.

Percentage of U.S. Adults With Symptoms of Anxiety and Depression by Age and LGBT Status: June 1 - August 8, 2022

(In percent)



Source: U.S. Census Bureau, Household Pulse Survey public-use files, 2022.

SEXUAL HEALTH IS PART OF HEALTH

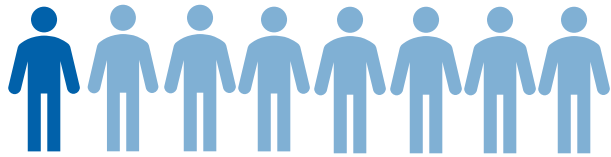
- A sexual history should be taken as part of routine health care
- By asking all clients a few essential questions, you help remove the stigma around discussing sex and normalize these conversations.
- Discussing a patient's sexual health offers opportunities to:
 - Gain an overall picture of your patient's health.
 - Counsel and share information about behaviors that may increase STI risk.
 - Screen for and treat STIs and address other sexual health concerns.



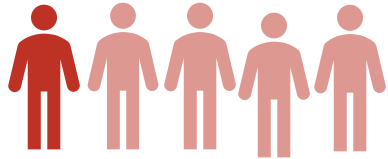
SUMMARY: HIV IN THE UNITED STATES



Around **1.2 million people** in the United States are living with HIV



Approximately **1 in 8** do not know they have HIV



Roughly **1 in 5** already have AIDS at the time of HIV diagnosis

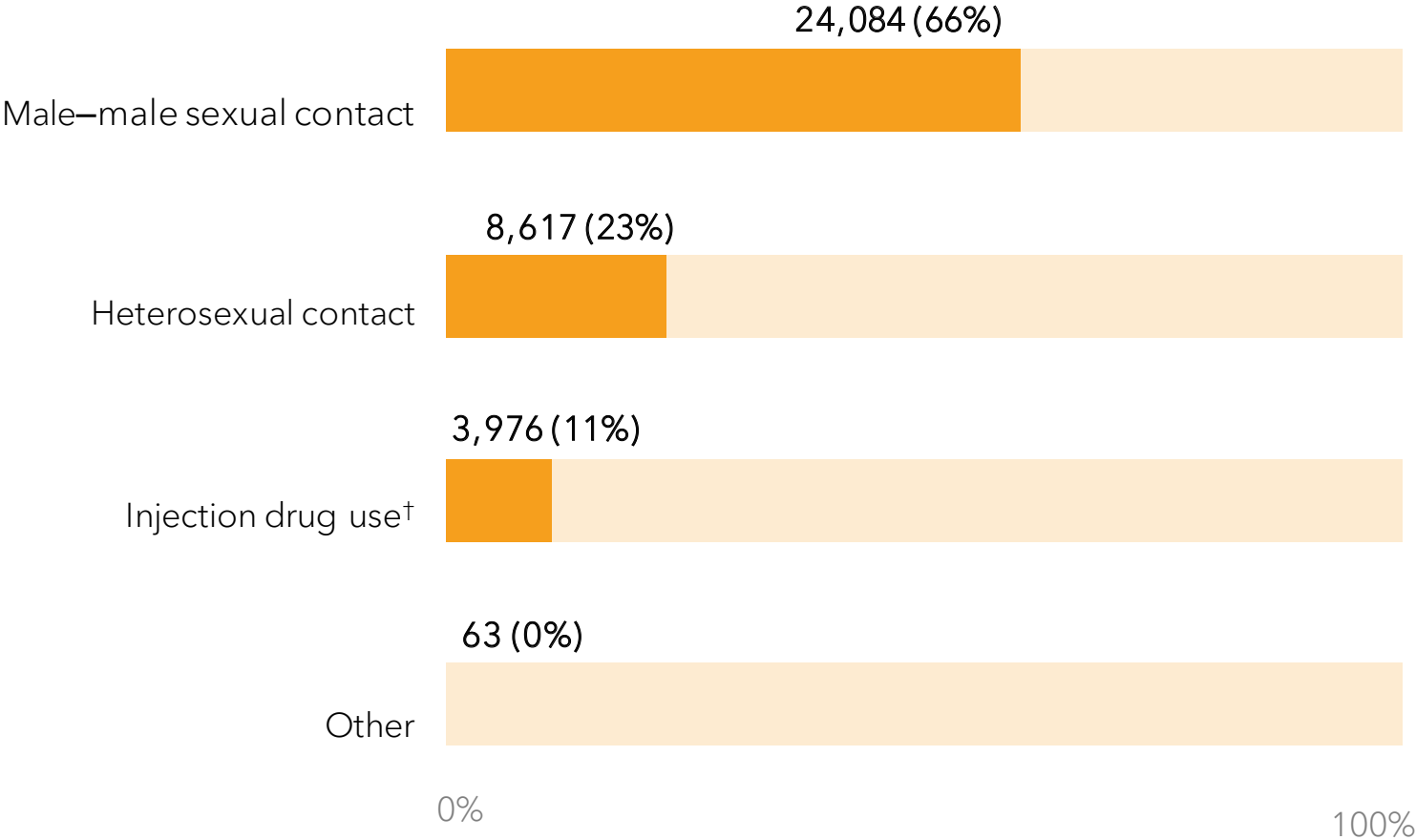
HIV disproportionately affects some populations:

- Men who have sex with men
- People of color
- Transgender people
- People who inject drugs

About 40% of new HIV transmissions are from people undiagnosed and unaware they have HIV

People with serious mental illnesses in US are 6 times as likely to acquire HIV

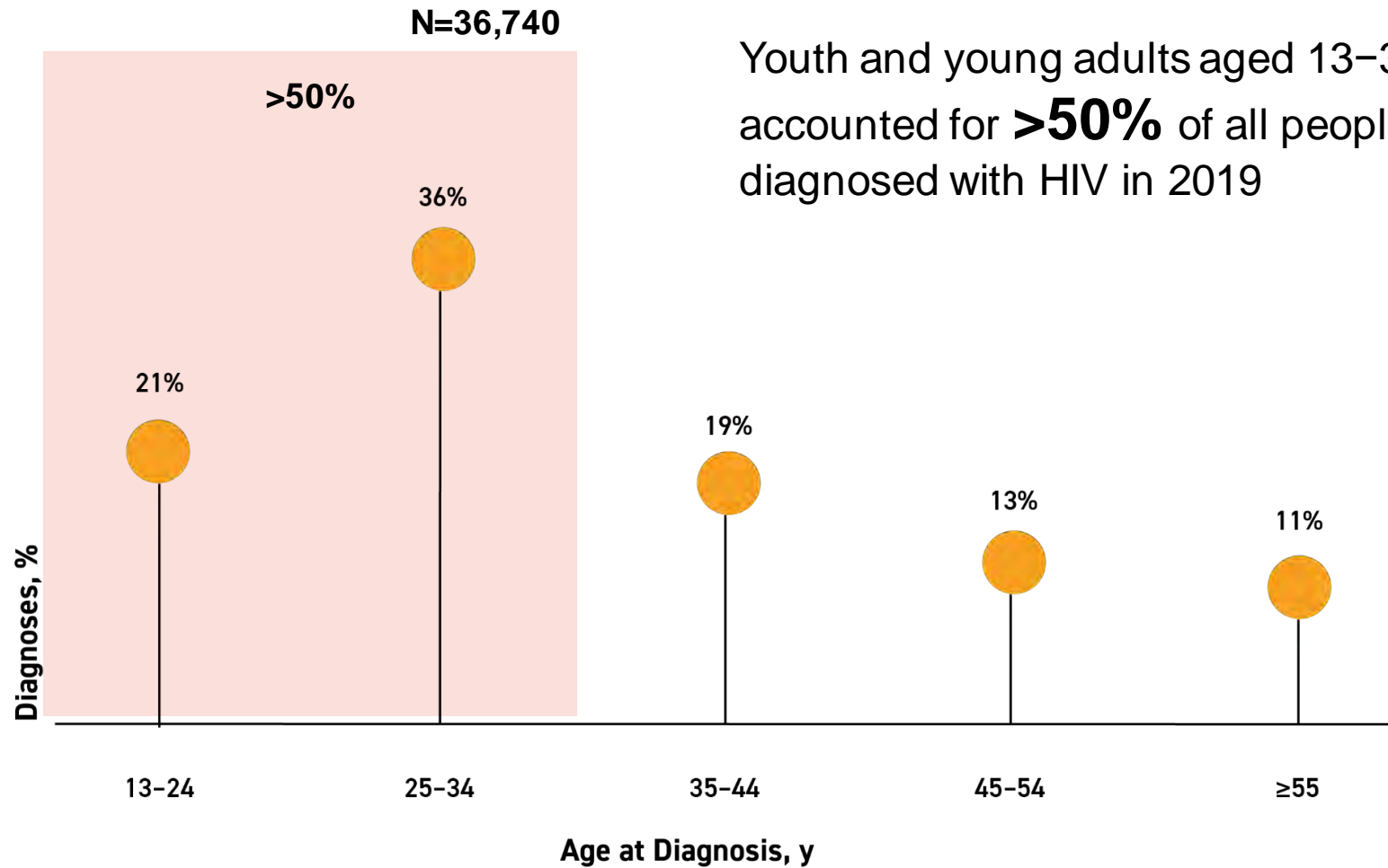
HIV DIAGNOSES BY TRANSMISSION CATEGORY



Two-thirds of new HIV diagnoses in 2019 were among gay, bisexual, and other men who have sex with men/

Centers for Disease Control and Prevention. Diagnoses of HIV infection in the United States and dependent areas, 2019. *HIV Surveillance Report*. 2021;32:51. <https://www.cdc.gov/hiv/pdf/library/reports/surveillance/cdc-hiv-surveillance-report-2018-updated-vol-32.pdf>

HIV DIAGNOSES BY AGE AT THE TIME OF DIAGNOSIS



Youth and young adults aged 13–34 years accounted for **>50%** of all people newly diagnosed with HIV in 2019

HIV AND PEOPLE WHO ARE TRANSGENDER

Nearly
1 million
adults in the United
States identify as
transgender

HIV diagnoses among
transgender adults and
adolescents
increased
7%
between 2015 and
2019

Approximately
1 in 7
transgender people
with HIV already had
AIDS when they were
diagnosed

Transwomen are
49X more
likely than others to
acquire HIV.
>50% of
transwomen of color
will acquire HIV in their
lifetime.

HIV SURVEILLANCE SPECIAL REPORT



HIV Infection, Risk, Prevention, and Testing Behaviors Among Transgender Women National HIV Behavioral Surveillance - 2019–2020

1,608 transgender women were interviewed in **7 cities** with high levels of HIV.

42% had **HIV**

HIV was more common among Black/African American and Hispanic/Latina transgender women.



62%
Black/African American participants tested positive



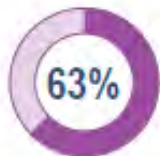
35%
Hispanic/Latina participants tested positive



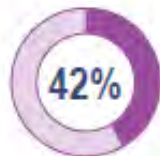
17%
White participants tested positive

63% visited a health care provider within 1 month after diagnosis and **90%** were currently taking antiretrovirals*

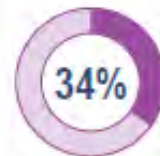
Many transgender women **experience poverty and homelessness**, factors that can affect overall health. Some transgender women may turn to **exchanging sex for money** because of discrimination and lack of economic opportunities.



63% lived at or below the federal poverty level



42% experienced homelessness in the past 12 months

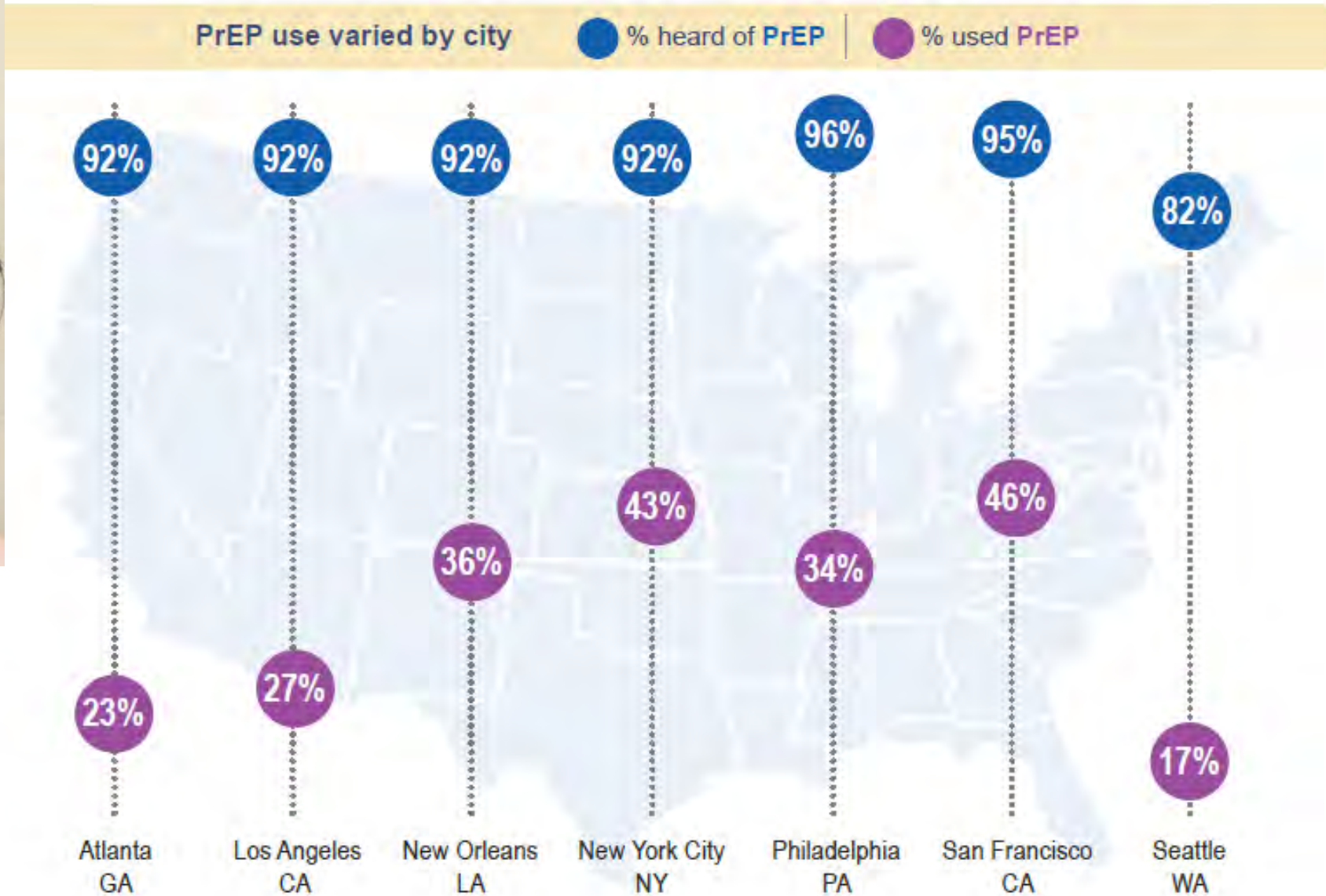


34% received money or drugs in exchange for sex



Among transgender women who were HIV-negative, PrEP awareness was high, but use was low.

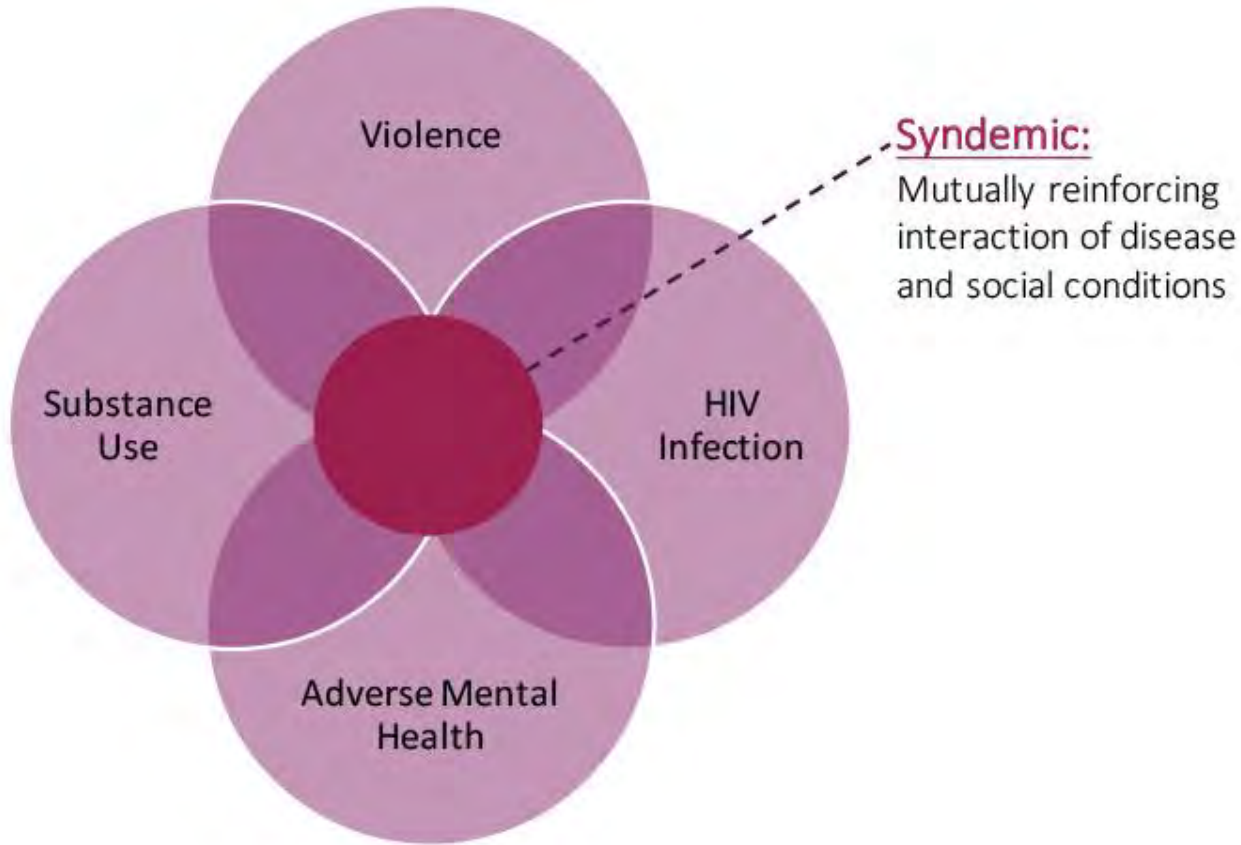
92% had heard of PrEP but only **32%** had used PrEP in the past 12 months.



Centers for Disease Control and Prevention. HIV Infection, Risk, Prevention, and Testing Behaviors Among Transgender Women—National HIV Behavioral Surveillance, 7 U.S. Cities, 2019–2020. HIV Surveillance Special Report 27.

<http://www.cdc.gov/hiv/library/reports/hiv-surveillance.html>. Published April 2021

THE SYNDEMIC OF MENTAL ILLNESS, SUD AND STI



- The U.S. has the highest rate of STDs in the industrialized world
- In 2022, CDC reported 2.5 million cases of chlamydia, gonorrhea or syphilis in the US, half of those young people aged 15-24
- Since 2018, rates of
 - chlamydia increased by 21%
 - gonorrhea by 67%
 - syphilis by 76%
- People who have serious mental illness at increased risk of STI
- Greatest increase of syphilis among people who use methamphetamines

Screening, testing, and treating Sexually Transmitted Infections (STIs) is part of SAMHSA's whole person approach to behavioral health treatment and substance use prevention.

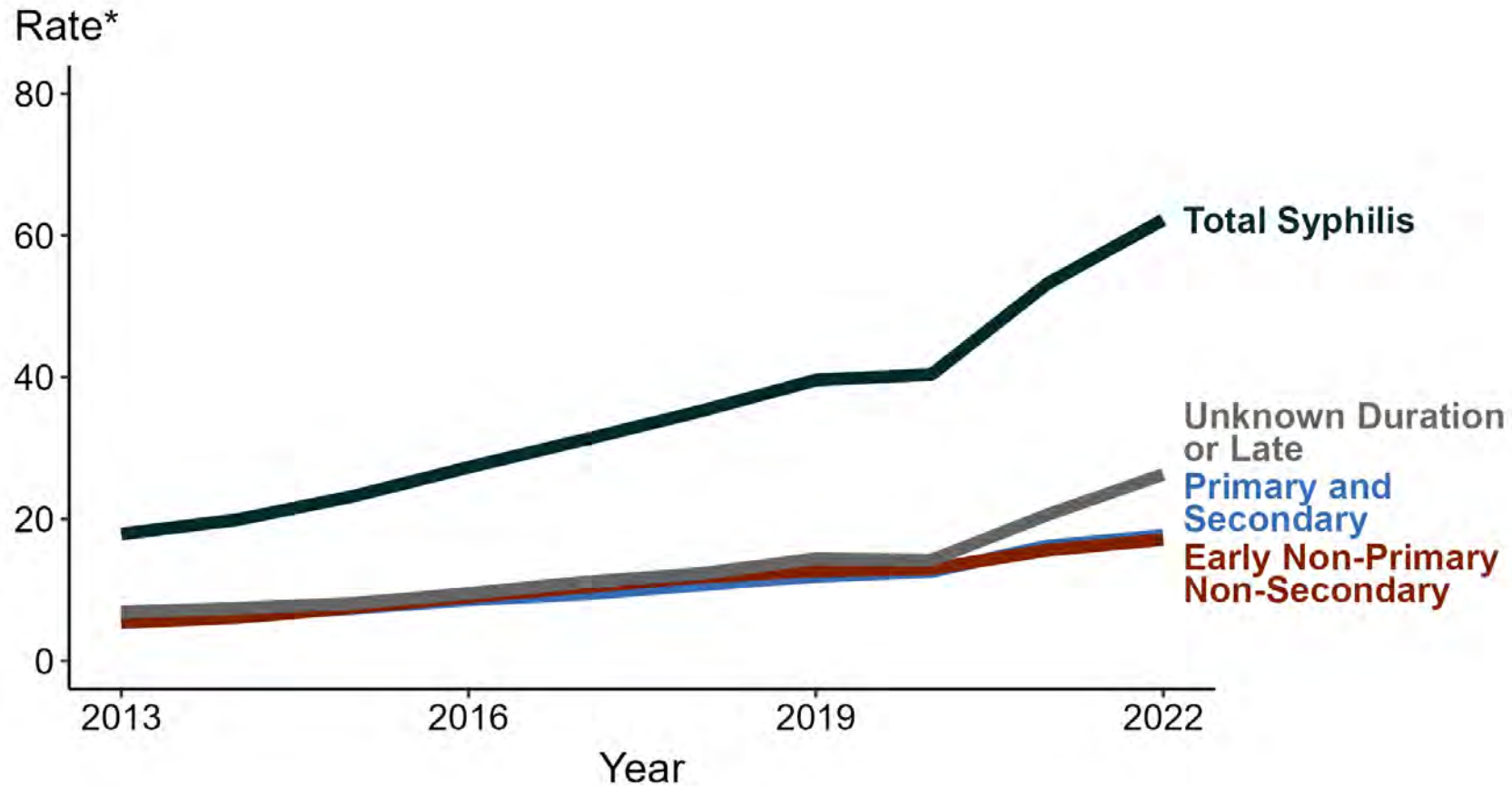
*-- letter to colleagues from Dr. Miriam Delphin-Rittmon,
US Assistant Secretary for Mental Health and Substance
Use and Director of SAMHSA, January 30, 2024*



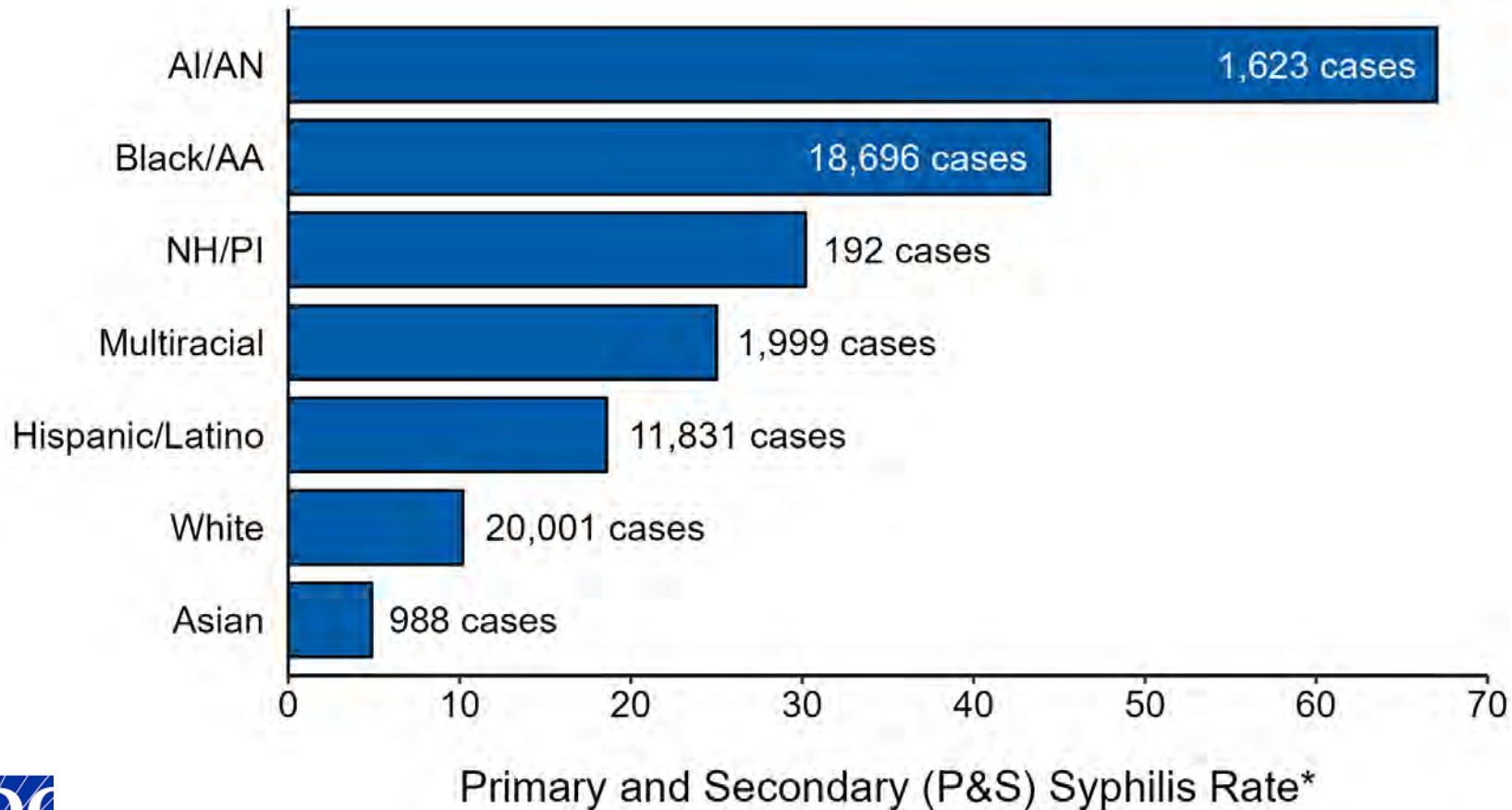
SYPHILIS – RATES OF REPORTED CASES BY STAGE OF INFECTION, UNITED STATES, 2013-2022

* Per 100,000

NOTE: Includes all stages of syphilis and congenital syphilis



PRIMARY AND SECONDARY SYPHILIS – CASE COUNTS AND RATES OF REPORTED CASES BY RACE/HISPANIC ETHNICITY, UNITED STATES, 2022



* Per 100,000 population

